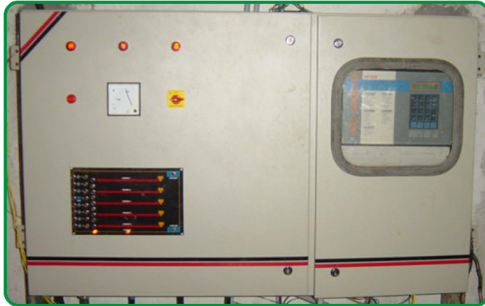


Details of the Control Panel

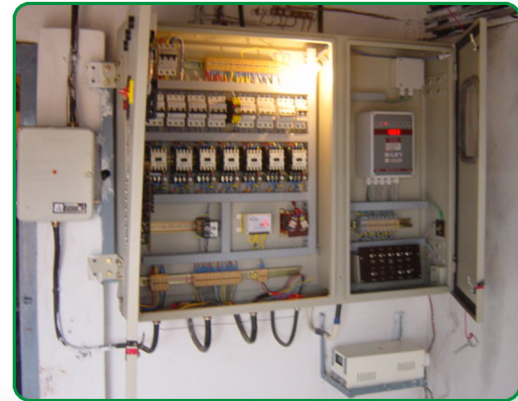


Features of the panel [Front side]

- 1 Three Phase Indicators
- 2 Voltage indicator with selector
- 3 Mimic Diagram
- 4 Alarm, audio and light flashing

Inside Arrangement

- 1 Main mcb 32 amp
- 2 For each stage control or relay or device control separate mcb 4 amp, then the contactor mn9, with overload relay.
- 3 Each panel with time delay so that when the electricity is interrupted, all the panels will not start at once.
- 4 All the wires with proper identification.
- 5 Separate power and control circuits.



Controller

- 1 Total 8 relays available, we can use as under fans groups 5, heater 1, cooling 1, alarm 1.
- 2 Two temp sensors and one humidity sensor.
- 3 Option of using heater relay as fan relay.
- 4 Auto manual option.
- 5 Programmable from day one to day out.
- 6 Data for all the days is stored min and max temp Humidity of each growth day.
- 7 Cooling cut off at 85 % r h
- 8 PC connectivity.
- 9 Real time clock,
- 10 10 minimum ventilation features available.

DHUMAL INDUSTRIES
E - 36, D Road, MIDC,
Satpur, Nashik - MH 422007,
India. Tel: +91 253 2350384
Fax: +91 253 2351584.